



# Spotlight on Success

## *Superintendent's Message*

# The Opportunity that is DAIT

We are one of 50 districts statewide facing additional sanctions this year due to our status of being in Program Improvement for the 3rd year. At its November 5, 2008 meeting, the State Board of Education approved the California Department of Education recommendation for these districts.

The recommendation put into place was Sanction #6 for all districts. This sanction requires us to ensure we have current adopted state approved instructional materials in language arts and math and that every teacher has completed the full 120 hours of professional development in each subject area. The sanctions further requires us to ensure we have fully implemented all of the recommendations contained in the Nine Essential Program Components (EPC). We are also required to contract with a District Assistance Intervention Team (DAIT) provider. Since we are already working with the SoCAT, we decided to engage them as our DAIT provider.

This year, we are required to undergo a process of data collection and analysis connected to the EPC's. This will lead to new recommendations from the SoCAT. These recommendations need to be written into

our LEA plan and implemented beginning this year. The SoCAT will continue to work with us through June 2010 to ensure implementation occurs.

I understand how demoralizing and punitive this process can be. It seems like we are being punished and the screws tightened. However, I choose to look at this DAIT process as a real opportunity to ensure we put into place systems that support learning.

We chose the SoCAT as our DAIT provider because of a commitment on their part to make this a collaborative process. The recommendations will be made with our input and participation.

On January 8, Jane Escobedo, SoCAT team leader, will provide an overview at our administrative team meeting of what they have learned so far from their analysis. This information will be brought back to sites on January 14. On January 27, the District Leadership team will meet with the SoCAT in order to review and finalize the recommendations. The result will be a blueprint that will guide our collective work over the next two years. Let's be sure this work informs instruction and makes a significant difference for our students.

## Debra Mills Joins Board; Measure J Approved

The November elections not only brought change to the country, but also to the Governing Board of our district. Debra Mills joins the Board after receiving the most votes in the race. Mrs. Mills lives near Bellevue School and has a son attending the school.

Yvonne Kennedy was re-elected once again. Mrs. Kennedy is our longest sitting trustee, having joined the Board in 1988.

Katherine Holden was not re-elected. Mrs. Holden served one four year term.

Having been elected this past November, Mrs. Mills and Mrs. Kennedy began to serve their four year terms last month.

In other election news, our facilities bond, Measure J, easily won approval receiving nearly 69% of the vote. Measure J will provide \$19 million in funding dedicated to building and renovating district facilities. We anticipate selling the bonds over three phases. The first phase is set for early

March, 2009 and will provide \$7.5 million. The initial projects to be funded are the completion of Taylor Mountain School and the construction of the district office. Bids for these projects are expected to be approved in May. Additional projects include the remodeling of the Bellevue School administrative wing and classrooms, renovations throughout Kawana School, and the development of the new property adjacent to Meadow View School.

Planning of these projects will begin this spring. It takes up to two years to move projects through the various agencies.

### Inside this Issue:

National Board Certification	2
School's Round-Up	3
Coaches Corner	3
January/February Calendar	4



# Schools Round-up: What's Going on at our Campuses

## Bellevue Happenings

Our Session I Reading Intervention program finished just prior to the Thanksgiving holiday. This was a very dedicated group of teachers and students that came to school at 7:30 – four days each week to work on their reading fluency. Several of the students are looking forward to Session II.

The Bellevue Student Council completed their annual canned food drive. We collected more than 1,100 food items for the Salvation Army.

The Thursday before winter break, students were treated to “Alice in Wonderland” by Theater 4. This group of actors brings live theater to local schools and is sponsored by generous community donations for the preservation of the arts. On that same date, Bellevue’s PTA hosted a Holiday Arts and Crafts night for PTA members and students. Hot chocolate with marshmallows was served.

As part of the HEAL program, Kaiser Permanente will sponsor the “Peace Signs” program for students in grades 3-5 in January. The program begins with school assemblies on January 16<sup>th</sup>. The assemblies are followed up with classroom workshops the following week. The program ends with a grand family celebration on January 22<sup>nd</sup>. This program supports Safe School Ambassador’s program in influencing conflict management on campus and in the community.

Our Cool School students begin a unit of study on Martin Luther King in January. Students will write poetry, prepare songs and skits about the importance of civil rights. The annual celebration will take place at Meadow View on January 16<sup>th</sup>.

## Kawana Update

A group of 20 students were treated to the Rotary Nutcracker presentation at the Spreckels Center in December. The library is now open every Thursday evening from 4:00—7:00 p.m.

The Winter plays, *How the Grinch Stole Christmas* and a *Christmas Carol* were presented on December 18th. The following morning, we hosted a Winter Sing-a-Long in the cafeteria.

The basketball season begins on January 13 vs Strawberry School. Cougar Power,

at its best, will be on display.

## What's New at Meadow View

The Meadow View PTA sponsored the Holiday Gift Shop giving students an opportunity to purchase inexpensive gifts for families and friends. Its next meeting is Monday, January 26, 2009 at 5:30 p.m. We welcome new active members.

Our School Site Council met on December 1 to continue reviewing our Single Plan for Student Achievement. Our Bilingual Resource Specialist presented data summarizing student growth under her program. Members of the council also reviewed budget information and began discussions of what programs or personnel might be cut due to a decrease in site funds. The next School Site Council meeting is January 5 at 3:30 p.m., at which time it will approve the Single Plan.

Our annual Winter Concert was held on

Thursday, December 18 at 6:30 p.m. This student presentation of holiday songs and poems was by far the best attended event Meadow View has had in a few years. An estimated 300 parents and families were present. The PTA served hot cocoa and cookies. In addition, the PTA moms sewed and put up an absolutely beautiful permanent back drop on the stage. They strung lights up all around the frame of the stage, making it look like a holiday present. This year our Merry Maestros (made up of teachers, staff and CalServes’ mentors) opened the show with “Deck the School” and finished the show with our new school song, “Sweet Meadow View.”

We ended the 2008 year on Friday, December 19 with our Student of the Month/ Perfect Attendance assemblies followed by a Sing-a-long. It was a most delightful and heartwarming way to end a year that

*Con't on page 4*

## Literacy Coaches Corner: ELLA

ELLA strategies were first introduced to our district as a part of explicit vocabulary lessons; however ELLA strategies are much more. They might better be called engagement strategies and they can be effectively used across the curriculum.

While most of us are comfortable with think pair share, you get the highest level of engagement when you use a variety of strategies throughout the day. ELLA strategies are a critical component of instruction with English Language Learners.

Are you using these engagement strategies: Think-pen-pair-share, buddy buzz, numbered heads together, whip around, huddle, response cards, designated partners, and random selection?

As your Literacy Coaches we are available to model these techniques for you.

On the SCOE (Sonoma County Office of Education) website there is a series of videos with Anita Archer. While not specific ELLA strategies, they do address student engagement. There is a 2<sup>nd</sup> grade

video on active participation and also a 7<sup>th</sup> grade video on active participation. One thing will stand out as you watch the videos: Dr. Archer is constantly moving. Especially when partners were sharing, she was continually moving around listening to students.

You can reach us by putting a note in our boxes or e-mail us at:

[efryer@bellevueusd.org](mailto:efryer@bellevueusd.org)

[mulkey@bellevueusd.org](mailto:mulkey@bellevueusd.org)

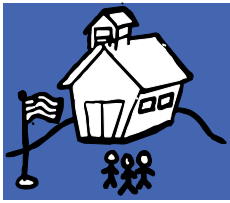
Ellen Fryer:

Taylor Mountain  
Mondays and Tuesdays  
Bellevue  
Wednesdays and Thursdays

Lonna Mulkey:

Kawana  
Mondays and Tuesday s  
Meadow View  
Wednesday s and Thursday s

*-Ellen Fryer and Lonna Mulkey,  
Literacy Coaches*



## BELLEVUE UNION SCHOOL DISTRICT

3223 Primrose Avenue  
Santa Rosa, CA 95403  
707-542-5197

Bellevue School 707-542-5195  
Kawana School 707-545-4283  
Meadow View School 707-541-3715  
Taylor Mountain School 707-542-3671

***Success for All***

Have a suggestion for a future article or feature? Please contact Marie White at the district office with your suggestions.

## Schools Round-up

*con't from page 2*

so far has been filled with assessments, data collection, federal and state sanctions, a feeling of gloom and doom disappeared into the magic of the holidays.

### Taylor Mountain News

Two teams of three teachers went to visit other school sites. Tony Pennacchio, Lisa Chierici and Jessica Archer visited Burbank School. Their visit provided information regarding scheduling uninterrupted core instruction and intervention as well as implementing a common dress policy.

Megan Thornton, Margaret Close and Erin Hartelt visited J.X. Wilson. They observed regrouping for reading based upon assessments, use of specific standards based intervention materials and a school wide focus on reading fluency. Our staff will discuss their observations and application for Taylor Mountain students.

Wednesday, January 7  
Thursday, January 8  
Tuesday, January 13  
Wednesday, January 14  
Monday, January 19  
Tuesday, January 20  
Wednesday, January 21  
Thursday, January 22  
Tuesday, January 27  
Wednesday, January 28  
Thursday, January 29  
Friday, January 30  
Monday, February 2  
Monday, February 2  
Tuesday, February 3  
Tuesday, February 3  
Wednesday, February 4  
Thursday, February 5  
Thursday, February 5  
Friday, February 6  
Monday, February 9  
Wednesday, February 11  
Thursday, February 12  
Monday, February 16  
Tuesday, February 17  
Wednesday, February 18  
Thursday, February 19  
Wednesday, February 25  
Thursday, February 26  
Friday, February 27

Taylor Mountain teachers have been busy collecting student work and information for the DAIT team. Teachers worked with the DAIT team members to align work samples to the standards.

On December 5, administrators participated in all day emergency service training. As part of our emergency preparation, Taylor Mountain practiced a lock down drill.

PTA had their December meeting Wednesday, December 17 along with a family craft night. Each student made two holiday crafts and decorated a cookie.

ELAC, SSC and PTA put out a parent

PLC: 2nd Hour is Teacher Directed  
Intervention Committee, Bellevue, 3:30 p.m.  
Gate Advisory, Bellevue, 7:00 p.m.  
PLC: 2nd Hour is Site Directed  
ML King Jr. Holiday, No School  
Board Meeting, Bellevue, 7:00 p.m.  
PLC: 2nd Hour is Teacher Directed  
EL Committee, Kawana, 3:30 p.m.  
Leadership Committee, SCOE, 8:30 a.m.  
PLC: 2nd Hour is District Directed  
Kindergarten Collaboration Day #2  
1st Grade Collaboration Day #2  
2nd Grade Collaboration Day #2  
DELAC, Kawana, 6:30 p.m.  
3rd Grade Collaboration Day #2  
Gate Advisory, Bellevue, 7:00 p.m.  
PLC: 2nd Hour is Teacher Directed  
4th Grade Collaboration Day #2  
Steering Committee, Bellevue, 3:30 p.m.  
5th/6th Grade Collaboration Day #2  
Lincoln's Holiday, No School  
PLC: 2nd Hour is Site Directed  
Intervention Committee, Bellevue, 3:30 p.m.  
President's Day, No School  
Board Meeting, Kawana, 7:00 p.m.  
PLC: 2nd Hour is Teacher Directed  
Assessment Committee, Bellevue, 3:30 p.m.  
PLC: 2nd Hour is District Directed  
EL Committee, Kawana, 3:30 p.m.  
End of 2nd Trimester

survey regarding our student support, outside committee meetings and community needs. Every parent that turned in a survey was entered into a drawing to win 30 gallons of gas from Redwood Petroleum. The results of the survey will be available for the next board meeting.

The principal met with the architect, Gwin Stumbaugh of TLCD Architecture to discuss the new construction. If everything proceeds as planned, we will break ground on the two pods and multipurpose/cafeteria summer, 2009 with completion in spring 2010.

*Look for school updates in each issue...*